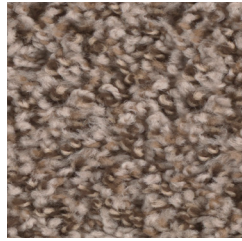
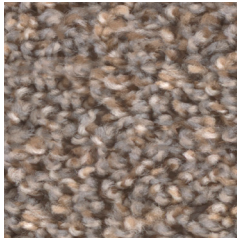


COLORWAYS OFFERED



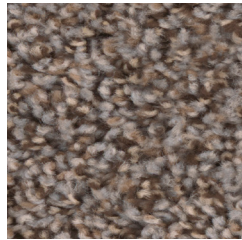
450 Dusky



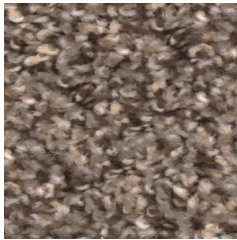
447 Periwinkle



724 Parchment



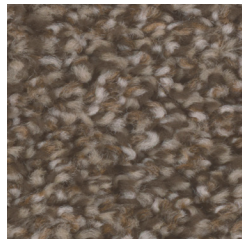
454 Locket



783 Ironclad



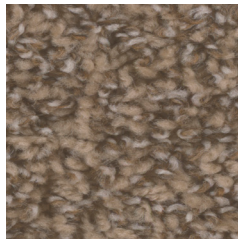
767 Fawn



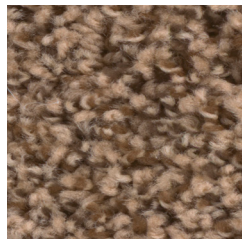
709 Richness



552 Boulder



827 Esteem



512 Agate

E160 IRONSIDE





E160 IRONSIDE



FEATURES AND BENEFITS

- *Eliminates The Typical Issues Associated With Topically Dyed Carpet. Purecolor® Minimizes Shading, Side Match Or Color Variation From Samples. No Dye Lots.*
- *FHA - 100 % Purecolor™ Solution Dyed High Performance Pet Fiber.*
- *Independent Testing By Flooring Contractors Shows Best-In-Class Performance Forstain Resistance And Durability.*



Brand: Dream Weaver® - Step Two, EF MultiFamily - E160 Ironside



SPECIFICATIONS

- Construction:** Cut Pile
- Fiber:** 100% PureColor® SD BCF Polyester
- Weight:** Sub-FHA
- Width:** 12'
- Primary Backing:** Polypropylene
- Secondary Backing:** Polypropylene
- Pattern Repeat:** N/A
- Colors:** 10 Common Colorways with Step Two
- PAR:** 3.0

WARRANTIES



STAIN RESISTANCE
5 YEARS



FADE RESISTANCE
5 YEARS



PET STAINS
N/A



SOIL RESISTANCE
5 YEARS



ABRASIVE WEAR
5 YEARS



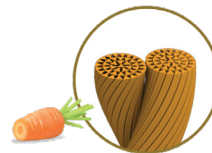
TEXTURE RETENTION
N/A



MANUFACTURING DEFECTS
5 YEARS

Pc⁰⁹ PURECOLOR®

PureColor® is our proprietary brand of solution-dyed fiber. This unique fiber technology provides vibrant, high definition visuals resulting in inherently vivid, durable carpets that won't stain, fade or bleach.



With **PureColor**, the color penetrates the fiber like the orange of a carrot.



The color on traditional carpet fibers sits on top like the red skin of a radish.